

# Navigating your thesaurus

In this lesson you are going to learn how to customize the Main Browser and how to display the hierarchy of a term. You are also going to print more reports and generate HTML and XML versions of your thesaurus.

Here is what you are going to do in this lesson:

1. Customize the Main Browser
2. Launch a web search for a term
3. Display the Hierarchy of a Term
4. Print the Top Term report
5. Print the Hierarchical report
6. Print the Rotated report
7. Create an HTML version of your thesaurus
8. Create an XML version of your thesaurus

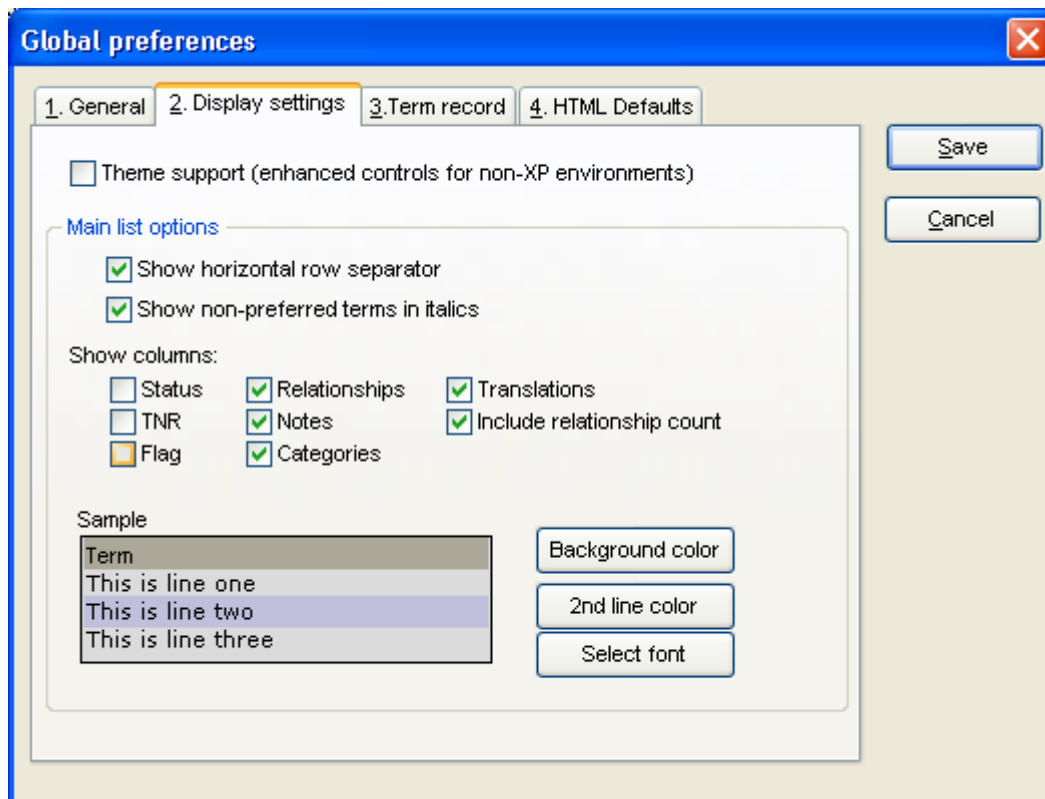
## 1. Customizing the Main Browser

1. If not open, using MultiTes Pro open the Geographic Locations thesaurus created in the previous tutorial.
2. Click and drag the vertical line on the column header in order to resize the Terms column

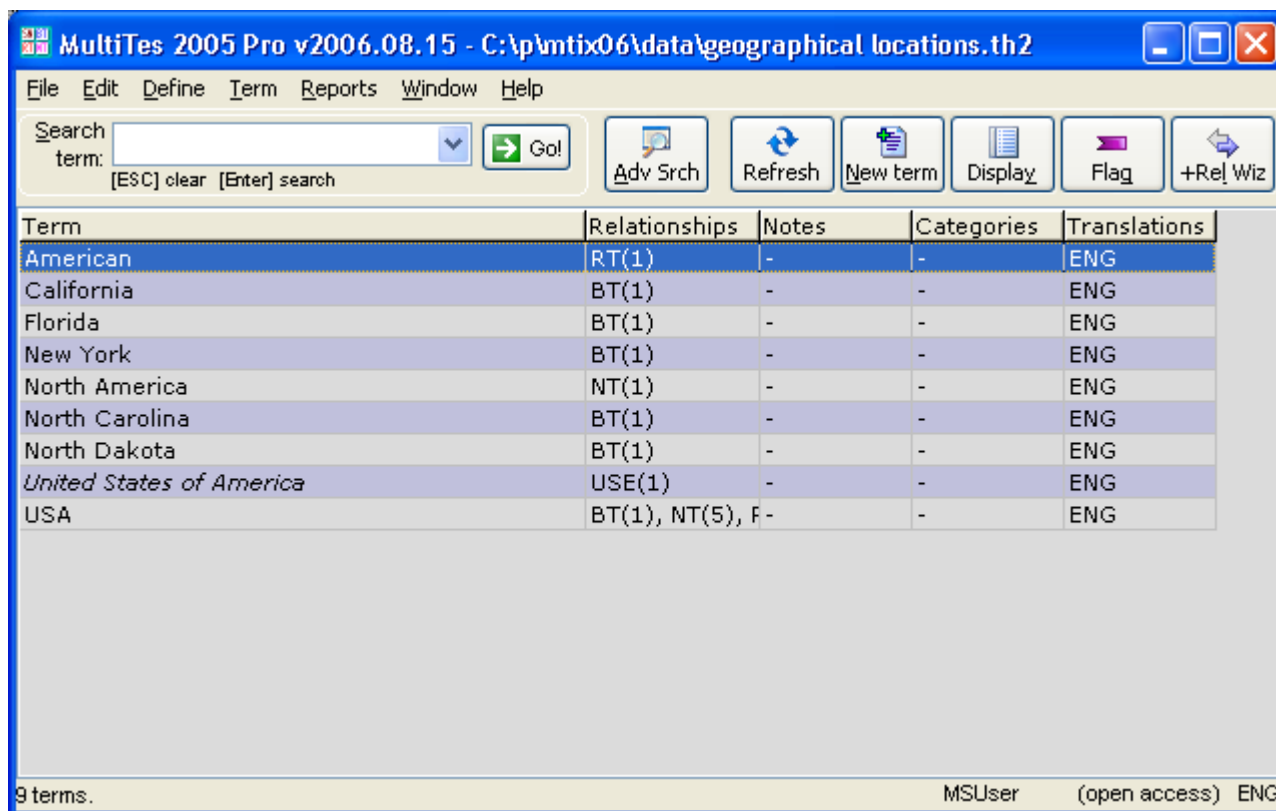
The screenshot shows the MultiTes 2005 Pro v2006.08.15 application window. The title bar reads "MultiTes 2005 Pro v2006.08.15 - C:\p\mtix06\data\geographical locations.th2". The menu bar includes File, Edit, Define, Term, Reports, Window, and Help. Below the menu bar is a search area with a text input field containing "term:", a "Go!" button, and several icons: Adv Srch, Refresh, New term, Display, Flag, and +Rel Wiz. The main area contains a table with the following columns: Term, Status, Flag, Relationships, Notes, Categories, and Translat. The table lists geographical terms such as American, California, Florida, New York, North America, North Carolina, North Dakota, United States of America, and USA. A vertical line is positioned between the Status and Flag columns, indicating a resize operation. The status bar at the bottom shows "9 terms." on the left and "MSUser (open access) ENG" on the right.

Term	Status	Flag	Relationships	Notes	Categories	Translat
American	A		RT(1)	-	-	ENG
California	A		BT(1)	-	-	ENG
Florida	A		BT(1)	-	-	ENG
New York	A		BT(1)	-	-	ENG
North America	A		NT(1)	-	-	ENG
North Carolina	A		BT(1)	-	-	ENG
North Dakota	A		BT(1)	-	-	ENG
United States of America	A		USE(1)	-	-	ENG
USA	A		BT(1), NT(5), RT(1), UF(1)	-	-	ENG

3. On the Define menu, click Preferences
4. Select the Display Settings tab
5. Uncheck the following: Status, Flag, Include relationship count

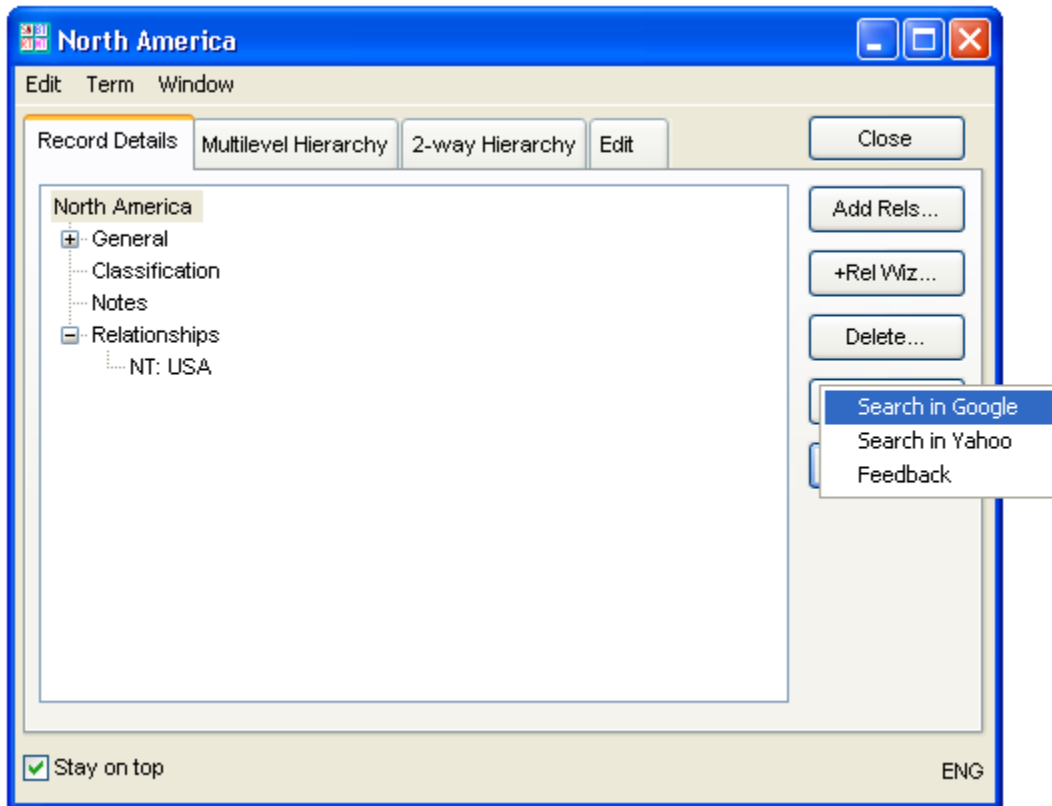


- Click the Save button



## 2. Launching a web search for a term

- Double click on North America
- Click on Web Search



3. Click on Search in Google

North America - Google Search - Microsoft Internet Explorer

Address <http://www.google.com/search?hl=en&lr=&ie=ISO-8859-1&q=North%20America&btnG=Search>

Google

Web Images Groups News Froogle Maps more »

North America Search [Advanced Search](#) [Preferences](#)

**Web** Results 1 - 10 of about 736,000,000 for **North America** [definition]. (0.16 seconds)

Image results for **North America**

Sponsored Links

**North America**  
Get Discovery DVD's Today - Shop for DVDs Online Today!  
[DiscoveryChannelStore.com](http://DiscoveryChannelStore.com)

**Big Bucks In Your Pajamas**  
Learn to earn executive pay at home and achieve financial freedom.  
[freedom-4-u-2.biz](http://freedom-4-u-2.biz)

**North America**  
Find deals for **North America**.

**North America - Wikipedia, the free encyclopedia**  
North America's only land connection is to South America at the narrow Isthmus of ... The vast majority of North America is on the North American Plate. ...  
[en.wikipedia.org/wiki/North\\_America](http://en.wikipedia.org/wiki/North_America) - 83k - Aug 3, 2006 -

### 3. Displaying the Hierarchy of a term

1. On the Term Record display, select the Multilevel Hierarchy tab

North America

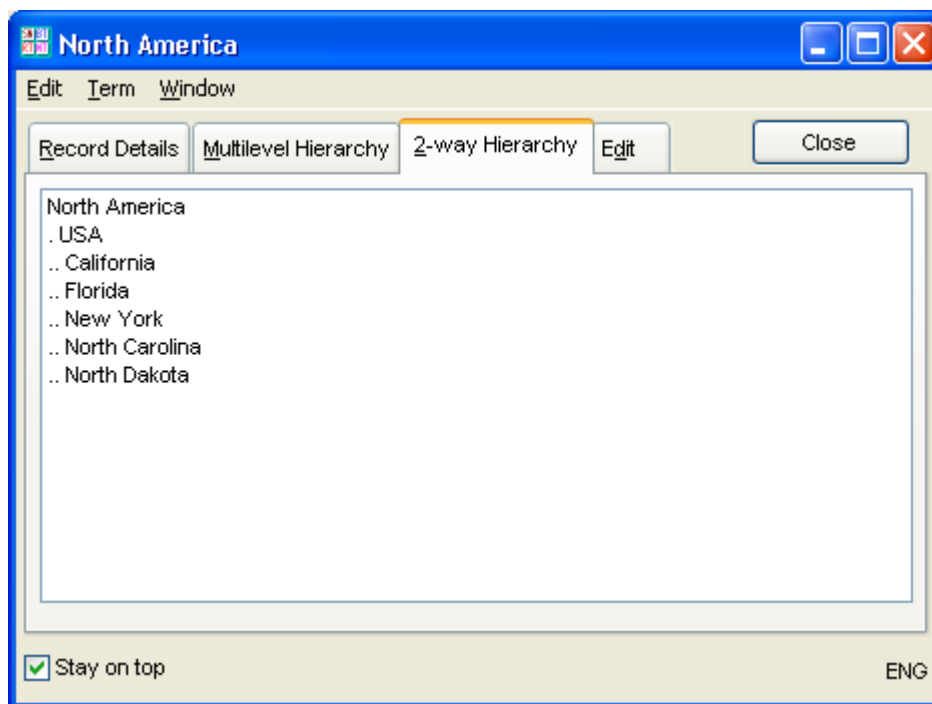
Edit Term Window

Record Details **Multilevel Hierarchy** 2-way Hierarchy Edit Close

North America  
NT1: USA  
NT2: California  
NT2: Florida  
NT2: New York  
NT2: North Carolina  
NT2: North Dakota

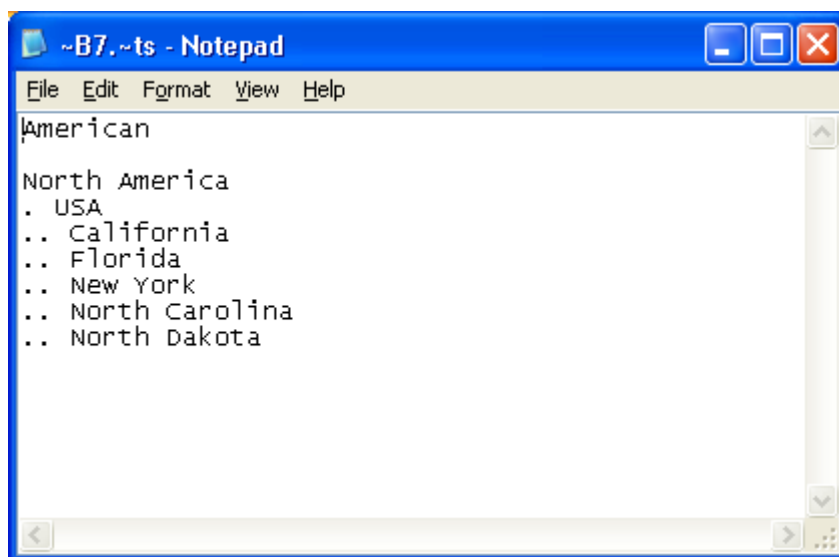
Stay on top ENG

2. On the Term Record display, select the 2-Way Hierarchy tab



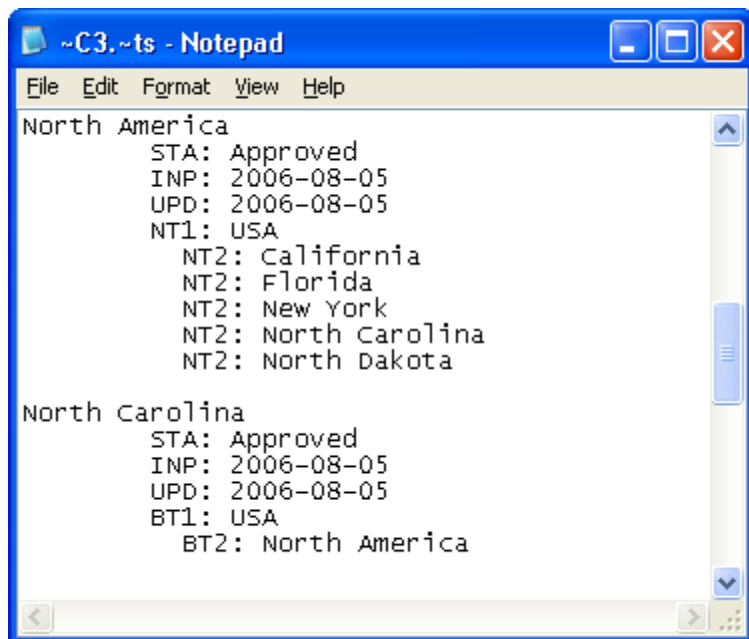
## 4. Printing the Top Term report

1. Close the Term Record for North America
2. On the Reports menu, click Top Term
3. Click the Print button



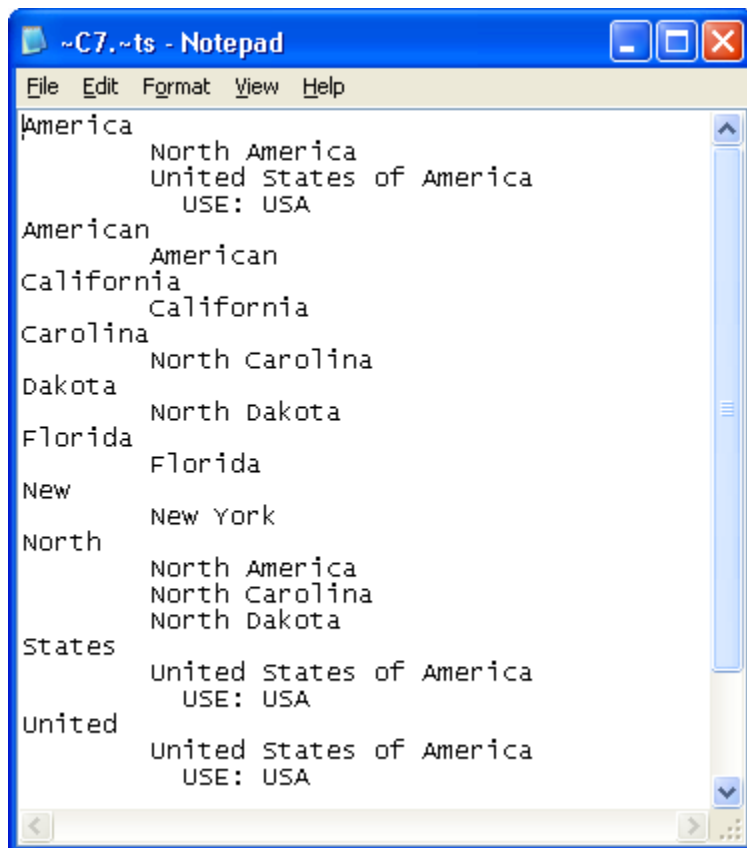
## 5. Printing the Hierarchical report

1. Close the Top Term report screen
2. On the Reports menu, click Hierarchical
3. Click the Print button



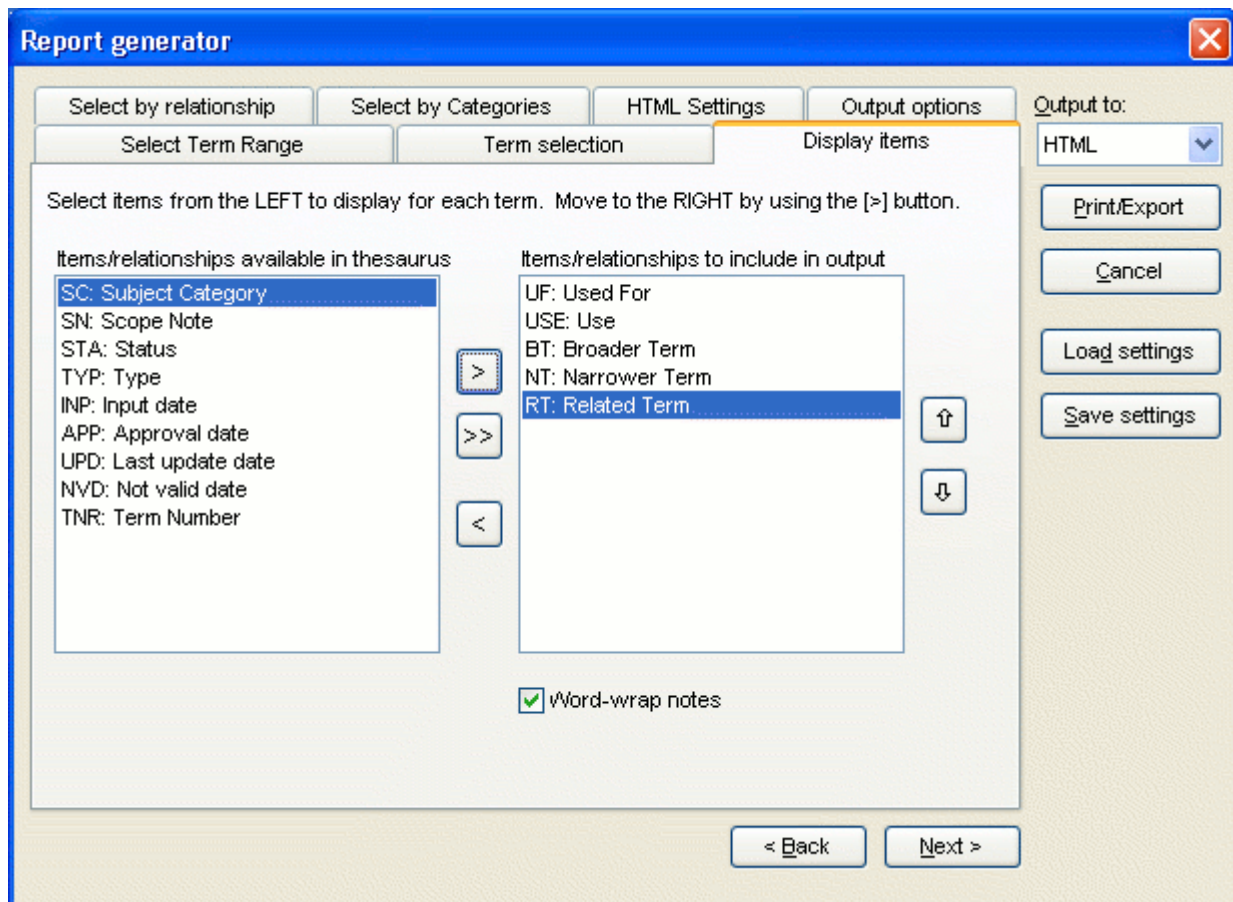
## 6. Printing the Rotated Index report

1. Close the Hierarchical report screen
2. On the Reports menu, click Rotated Index
3. Select the KWOC Options tab
4. Check the box to include cross references for non-postable terms
5. Type "of" in the Stop Words window
6. Click the Save button
7. Click Ok after you see the "Stop words saved" message
8. Click the Print button



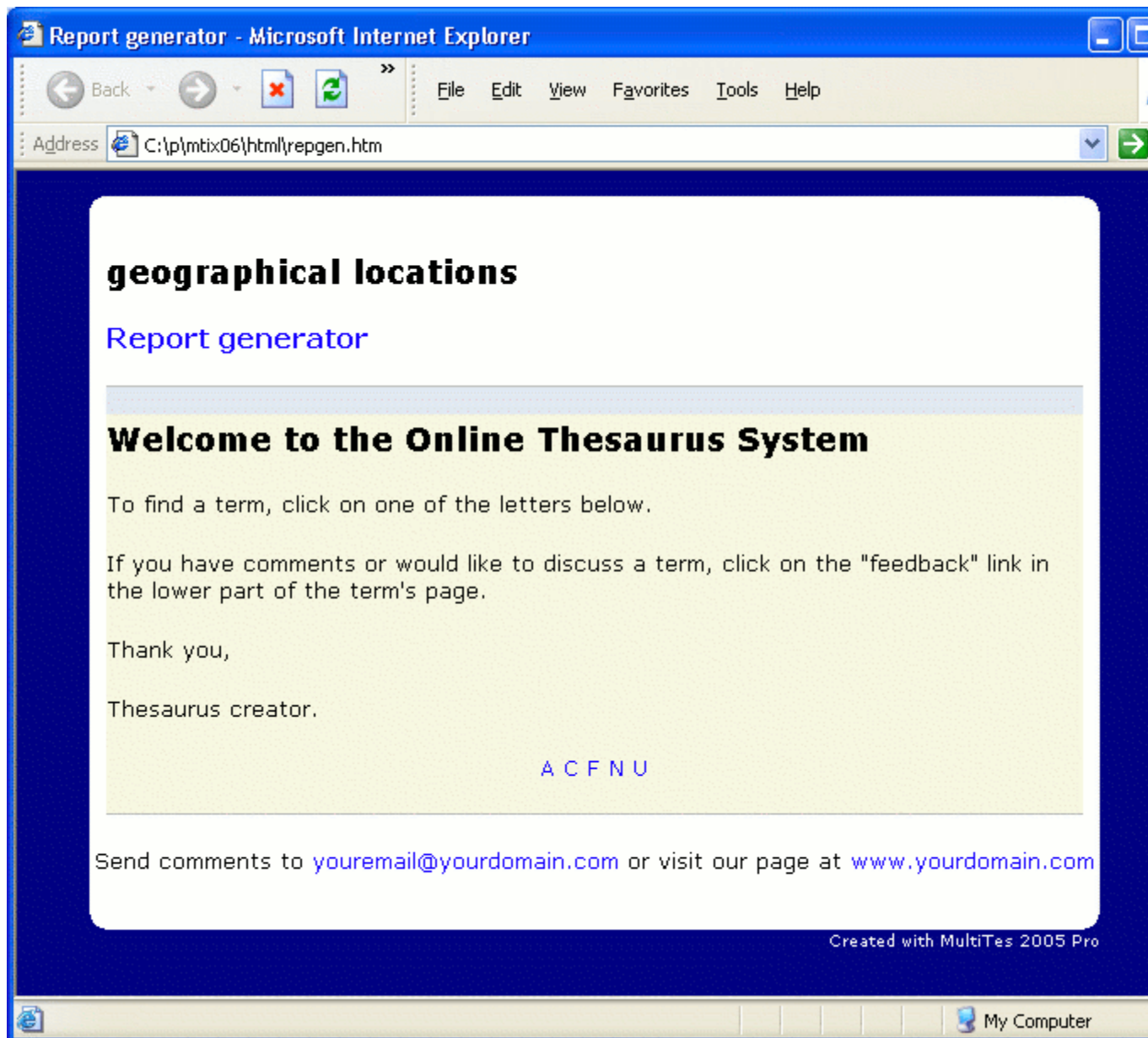
## 7. Creating an HTML Version of your Thesaurus

1. On the Reports menu, click Report Generator
2. Go to the Display Items tab
3. Select USE and click the > button
4. Repeat for UF, BT, NT, and RT



5. Select Output to **HTML**
6. Click the Print button
7. Click the Save button to accept the default name REPGEN.HTM
8. Click Yes when prompted "Do you want to display it now?". This option works only if you have set a "default web browser" for your system. Otherwise, you will need to run your internet browser separately and search for the reppen.htm file, usually under the **html** folder below the MultiTes folder.

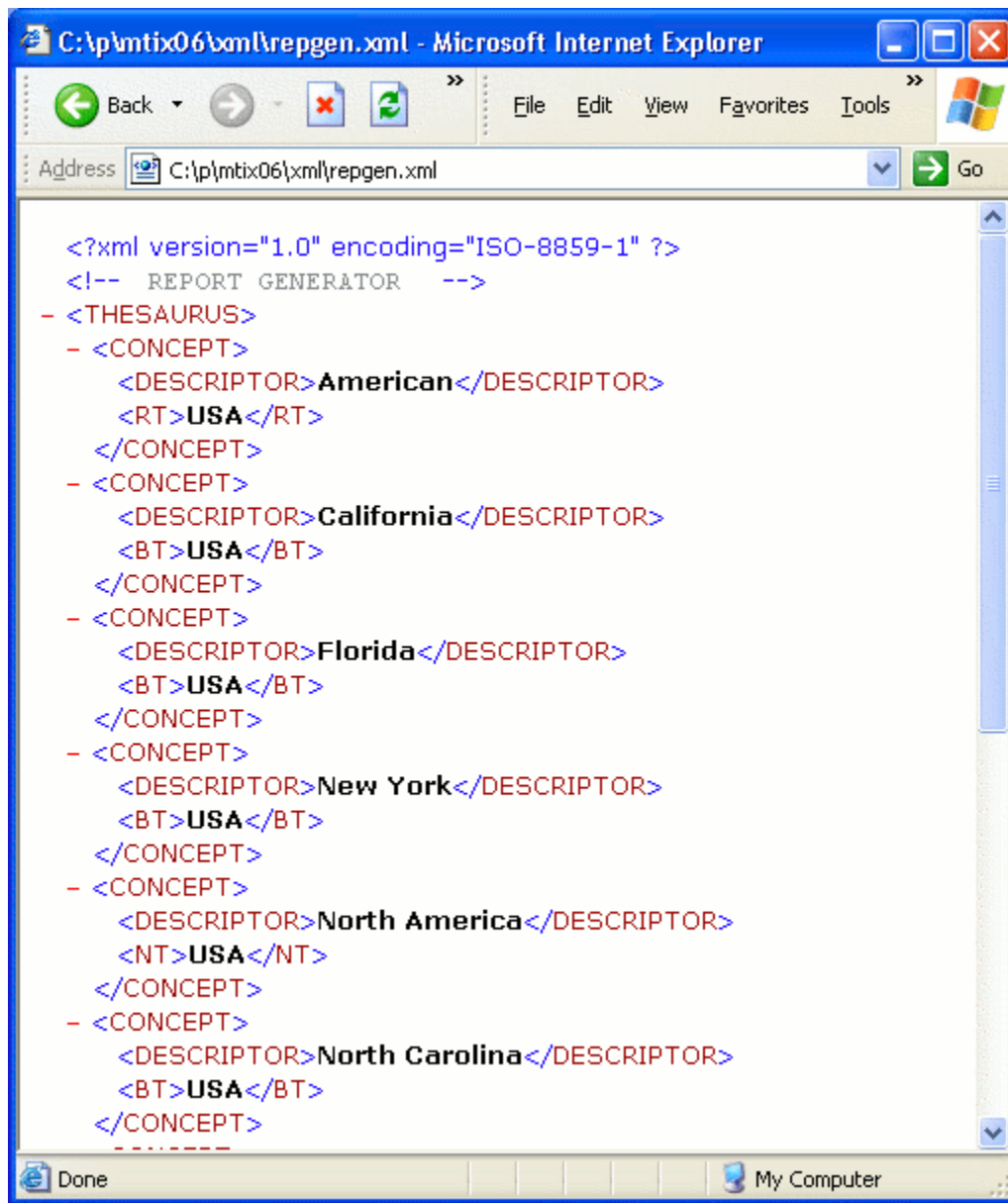




9. Use your internet browser to navigate through the web site
10. Close your internet browser

## 8. Creating an XML Version of your Thesaurus

1. On the Reports menu, click Report Generator
2. Go to the Display Items tab
3. Select USE and click the > button
4. Repeat for UF, BT, NT, and RT
5. Select Output to **XML**
6. Click the Print button
7. Click the Save button to accept the default name REPGEN.XML
8. Click Yes when prompted "Do you want to display it now?". This option works only if you have set a "default xml viewer" for your system. Otherwise, you will need to run it separately and search for the repgen.xml file, usually under the **xml** folder below the MultiTes folder.



```
<?xml version="1.0" encoding="ISO-8859-1" ?>
<!-- REPORT GENERATOR -->
- <THESAURUS>
- <CONCEPT>
  <DESCRIPTOR>American</DESCRIPTOR>
  <RT>USA</RT>
</CONCEPT>
- <CONCEPT>
  <DESCRIPTOR>California</DESCRIPTOR>
  <BT>USA</BT>
</CONCEPT>
- <CONCEPT>
  <DESCRIPTOR>Florida</DESCRIPTOR>
  <BT>USA</BT>
</CONCEPT>
- <CONCEPT>
  <DESCRIPTOR>New York</DESCRIPTOR>
  <BT>USA</BT>
</CONCEPT>
- <CONCEPT>
  <DESCRIPTOR>North America</DESCRIPTOR>
  <NT>USA</NT>
</CONCEPT>
- <CONCEPT>
  <DESCRIPTOR>North Carolina</DESCRIPTOR>
  <BT>USA</BT>
</CONCEPT>
-----
```