

Lesson No. 5

Working with Multilingual Thesauri

In this lesson you will learn how to create and maintain a multilingual thesaurus. You will build a trilingual thesaurus, which will give you a good idea of how to create thesauri with more than one language.

Here is what you are going to do in this lesson:

1. Create a Multilingual Thesaurus
2. Input new Terms with their Translation
3. Add standard Relationships between Terms
4. Enter the Translation for an existing Term
5. More options for entering the Translation of a Term
6. Display the Main Browser in Different Languages
7. Print your Thesaurus in Different Languages

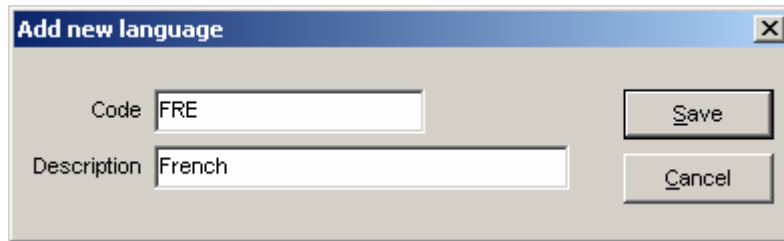
1. To create a multilingual thesaurus

1.1 On the **F**ile menu, click **N**ew

1.2 Enter Multilingual (or any other name) and save it

1.3 On the **D**efine menu, click **L**anguages

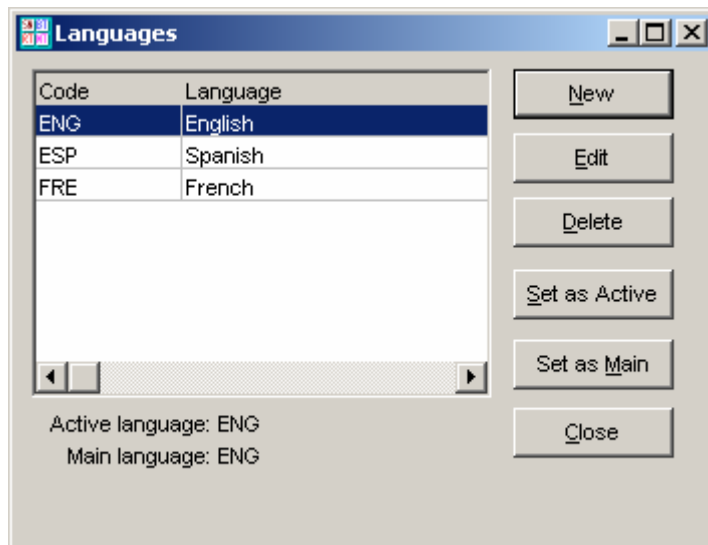
1.4 Click the **N**ew button



1.5 Type **FRE** in the Code field and **French** in the Description field

1.6 Click the **S**ave button and repeat the previous step to add code **ESP** and Description **Spanish**

1.7 The system will show the three languages currently defined for this thesaurus

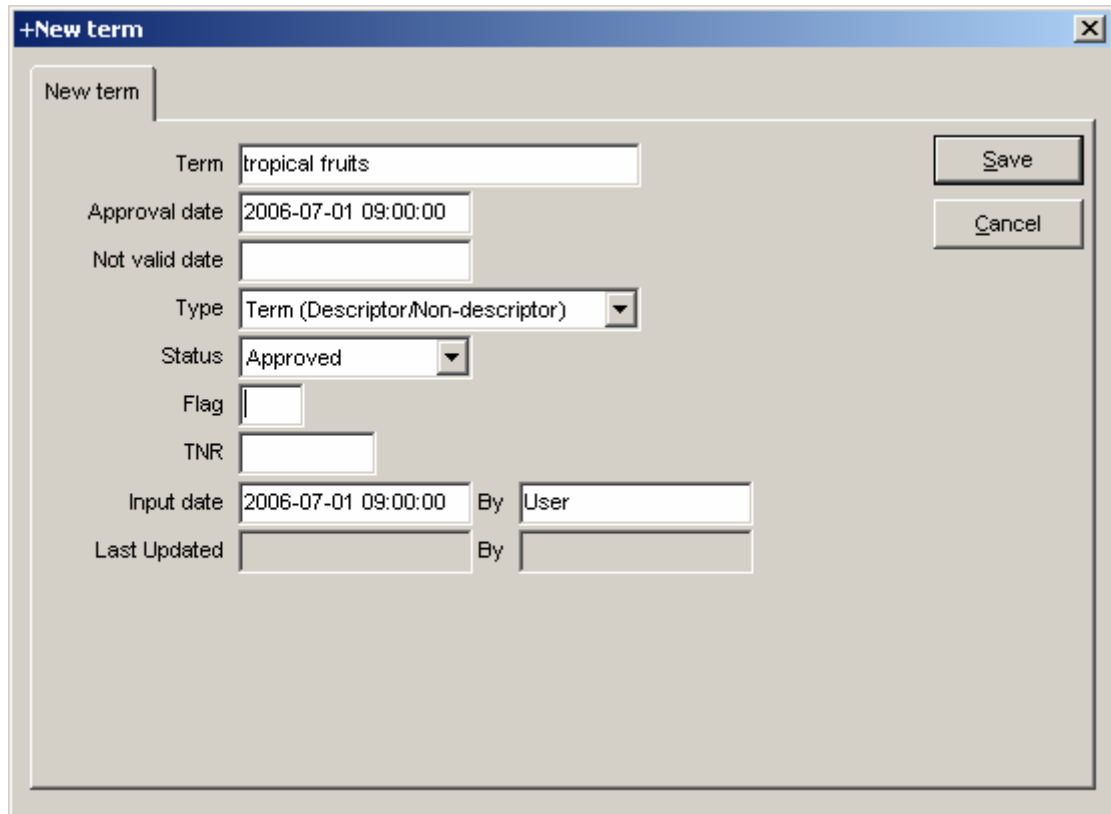


1.8 Click the **C**lose button to go back to the main browser

2. To input new terms

2.1 Press **Ctrl-N** or click the **New Term** button

2.2 Type **tropical fruits** and click the **Save** button

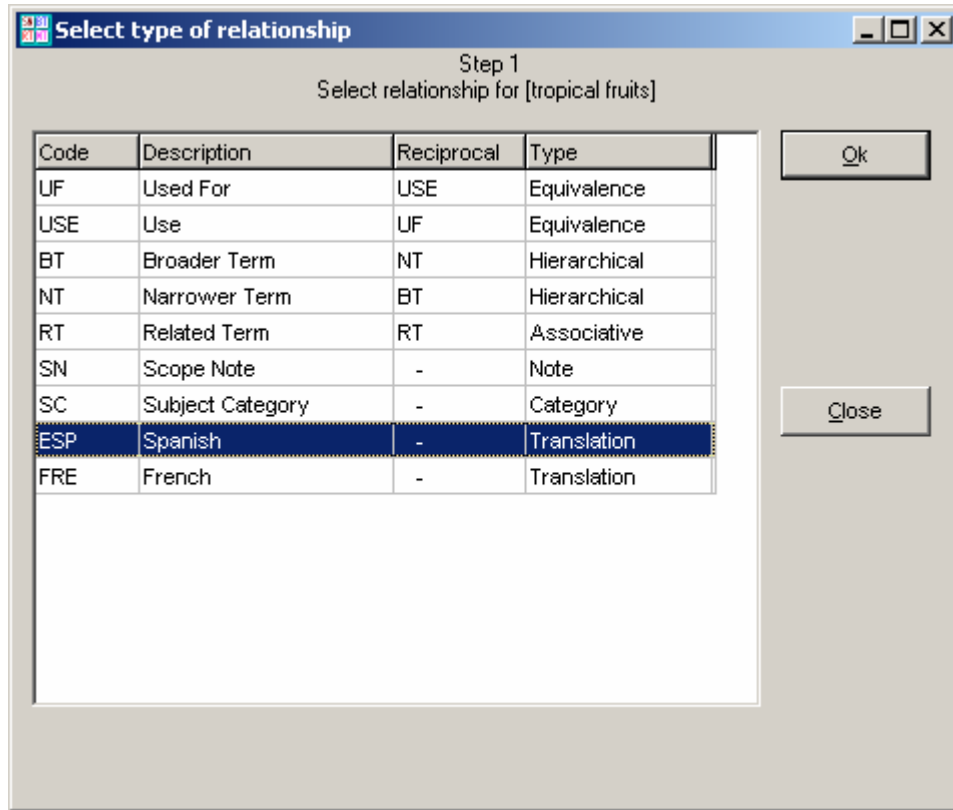


The screenshot shows a dialog box titled "+New term" with a close button (X) in the top right corner. The dialog box contains the following fields and controls:

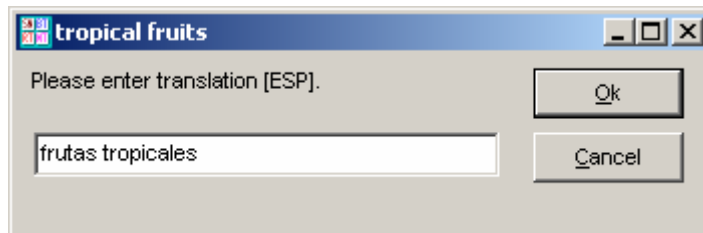
- Term:** A text input field containing "tropical fruits".
- Approval date:** A date and time input field containing "2006-07-01 09:00:00".
- Not valid date:** An empty date and time input field.
- Type:** A dropdown menu with "Term (Descriptor/Non-descriptor)" selected.
- Status:** A dropdown menu with "Approved" selected.
- Flag:** An empty text input field.
- TNR:** An empty text input field.
- Input date:** A date and time input field containing "2006-07-01 09:00:00".
- By:** A text input field containing "User".
- Last Updated:** An empty date and time input field.
- By:** An empty text input field.
- Buttons:** "Save" and "Cancel" buttons are located on the right side of the dialog box.

2.3 Use any of the following options to add a relationship

- On the **Term** menu, select **Add single relationship**
- Right Click on **tropical fruits** and select **Add single relationship**
- Click the **Add rels** button
- Press **Alt-L**



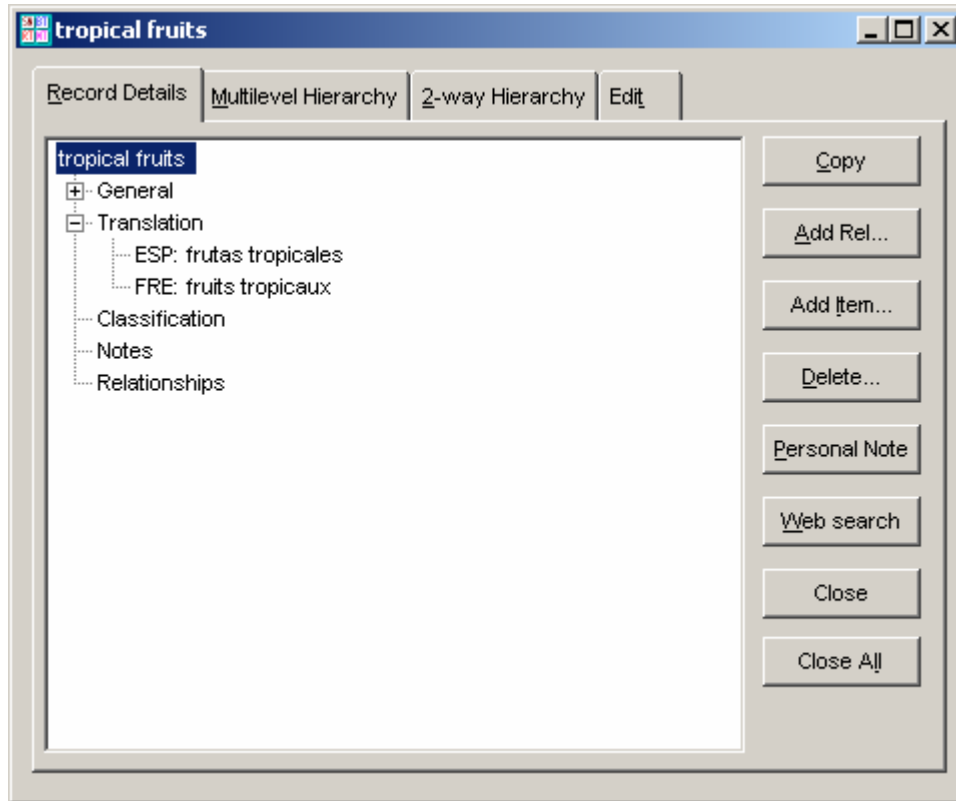
2.4 Doubleclick on **ESP Spanish**



2.5 Type **frutas tropicales** and click the **Ok** button

2.6 Repeat steps 2.3 and 2.4 to enter the French term **fruits tropicaux**

2.6 Doubleclick on **tropical fruits** to see the term record



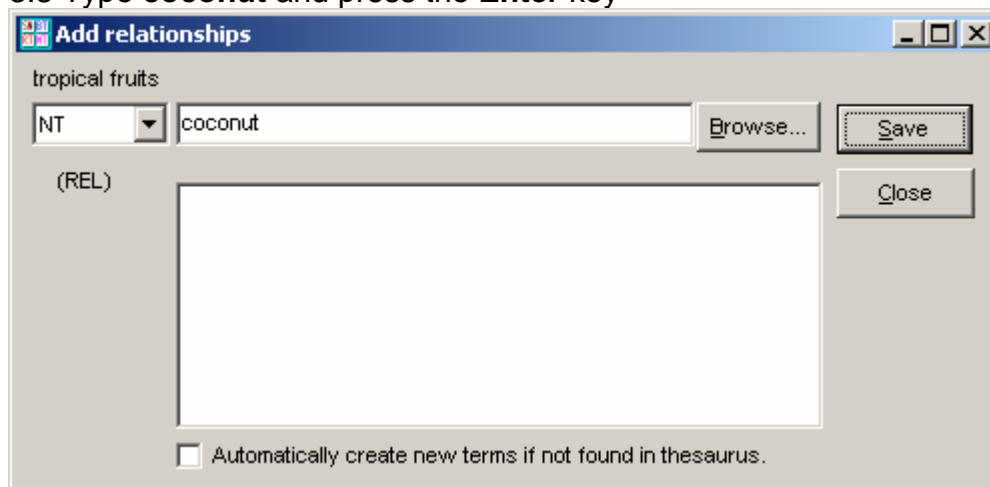
2.7 Click the **Close** button to go back to the main browser

3. To add standard relationships between terms

3.1 Press **Ctrl-A** to add multiple relationships of the same type

3.2 Select **NT** for Narrower Terms

3.3 Type **coconut** and press the **Enter** key



Note: A warning message will indicate that this is a new term. You can check the box at the bottom of this window to avoid seeing this message.

3.4 Repeat step 3.3 to enter the following **NT: Narrower Terms**

mango

orange

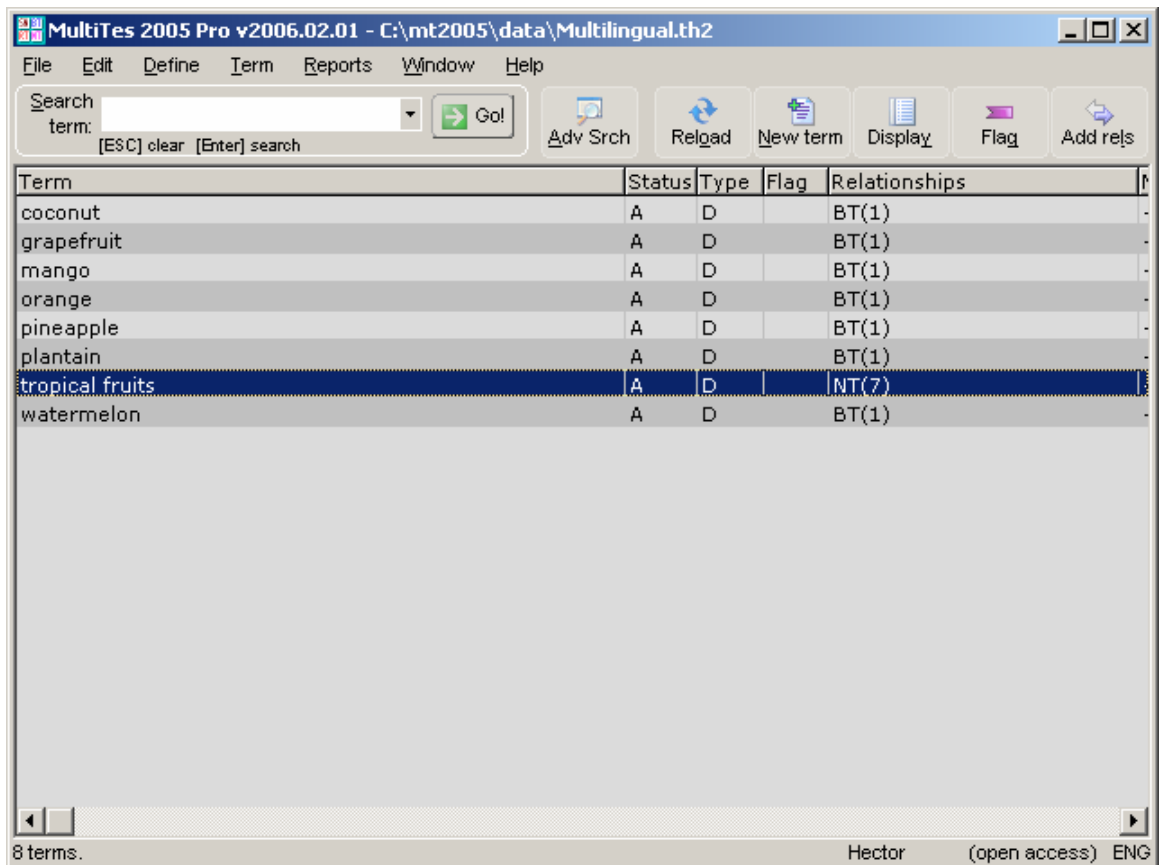
pineapple

plantain

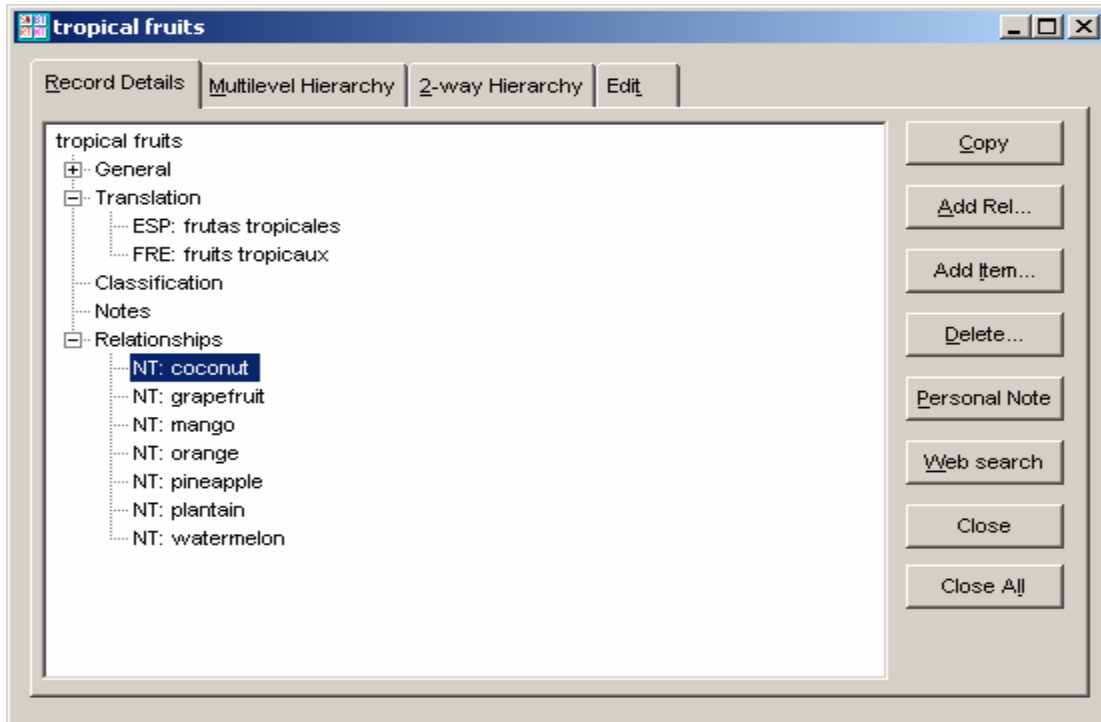
watermelon

grapefruit

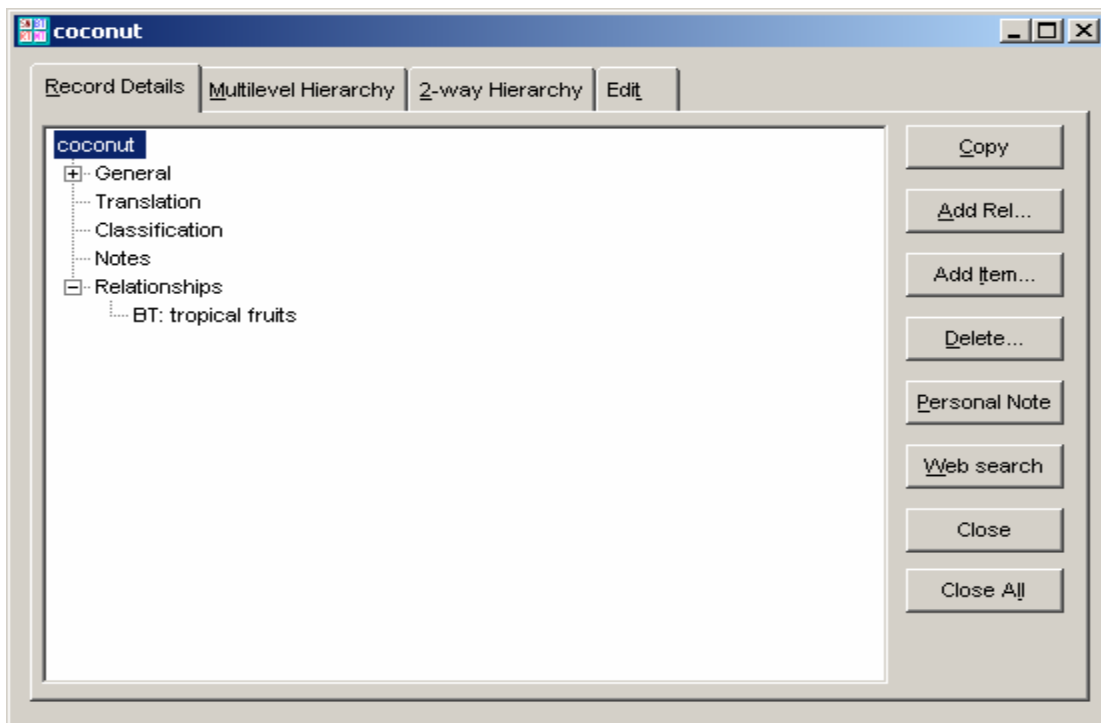
3.5 Press **Esc** to go back to the main browser and click the **Reload** button to see the new terms that you just entered



3.6 Doubleclick on **tropical fruits** to see the term record



3.7 Doubleclick on **coconut** (translation has not been entered yet)

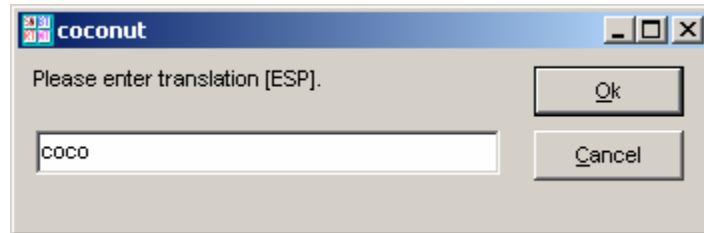


3.8 Click the **Close All** button to go back to the main browser

4. To enter the translation for an existing term

4.1 Select **coconut** and then press **Alt-L** to add a single relationship

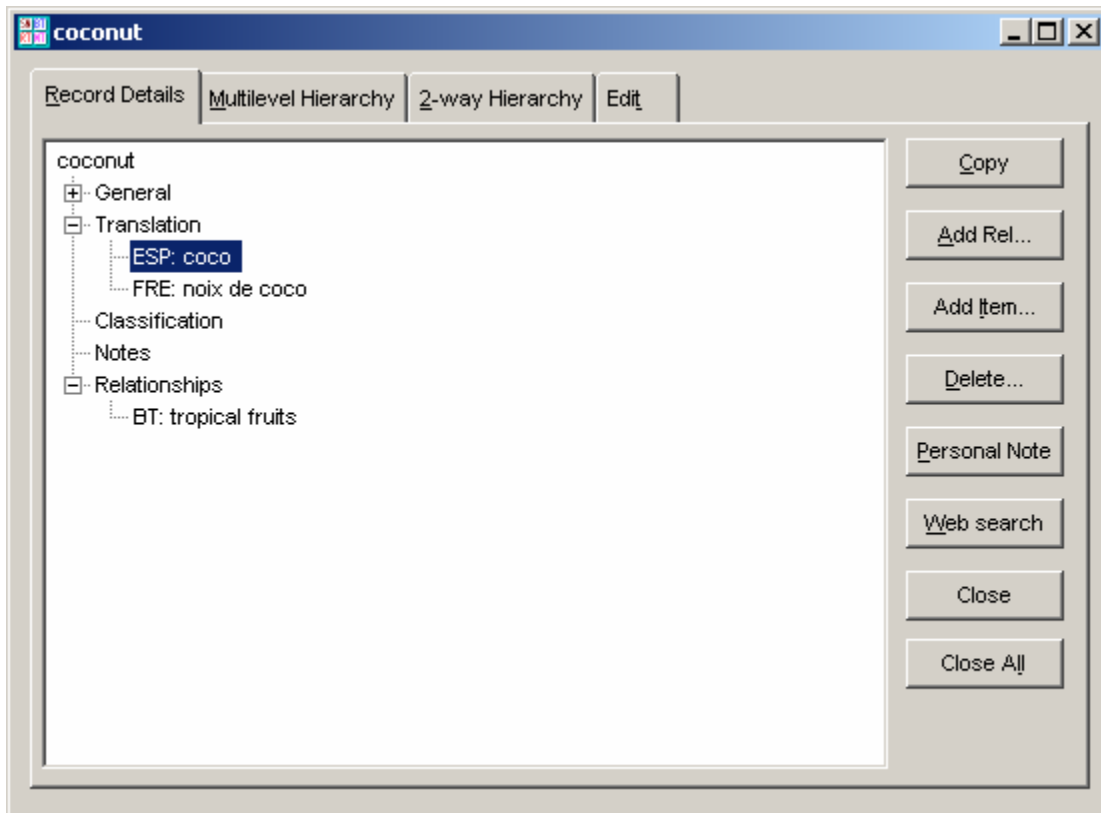
4.2 Doubleclick on **Spanish** and type **coco**, then press **Enter**



4.3 Press **Alt-L** again, select **French**, and type **noix de coco**

4.4 Click the **OK** button to go back to the main browser

4.5 Doubleclick on **coconut** to see the term record



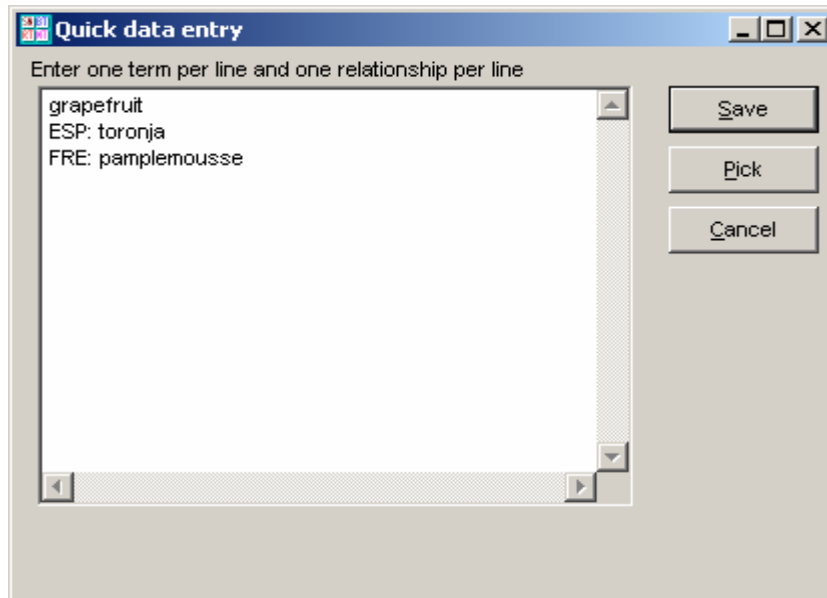
4.6 Doubleclick the Spanish translation **ESP: coco** to see the term record

4.7 Click **Close All** to go back to the main browser

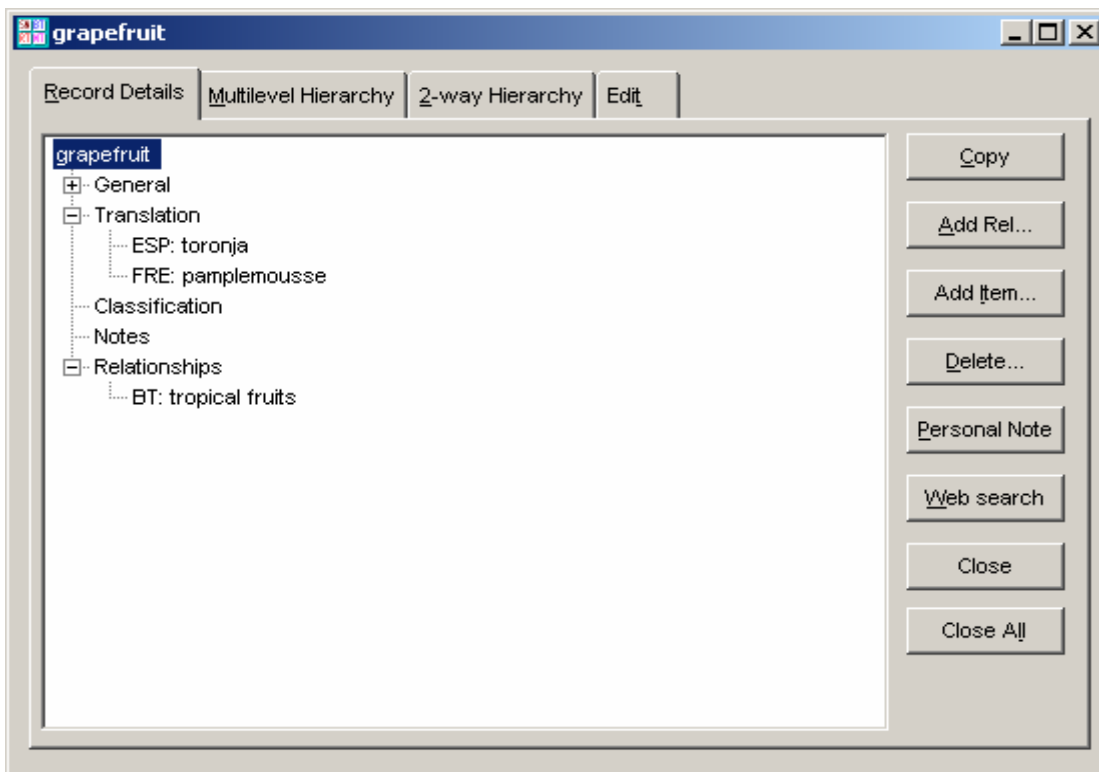
5. More options for entering the translation of a term

5.1 Press **Ctrl-Q** to invoke the **Quick Data Entry** screen

5.2 Type **grapefruit** and its translation as shown below



5.3 Click on **Save**, then doubleclick on **grapefruit** to see the term record

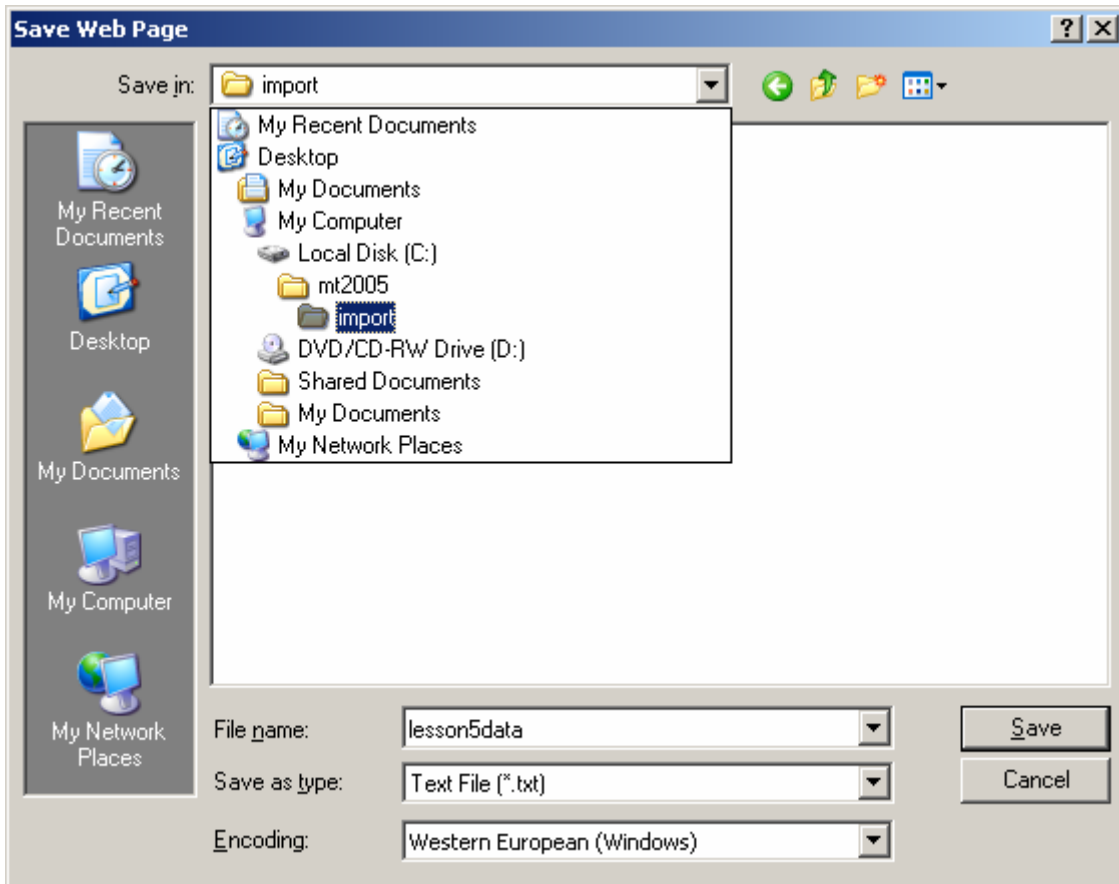


5.4 Click the **Close All** button

5.5 Download the following file from our website and take a look at it

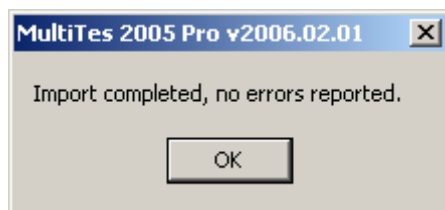
<http://www.multites.com/download/lesson5data.txt>

5.6 Save this file as **lesson5data.txt** in your **\mt2005\import** folder



5.7 On the **File** menu, click **Import** to input relationships via Text File

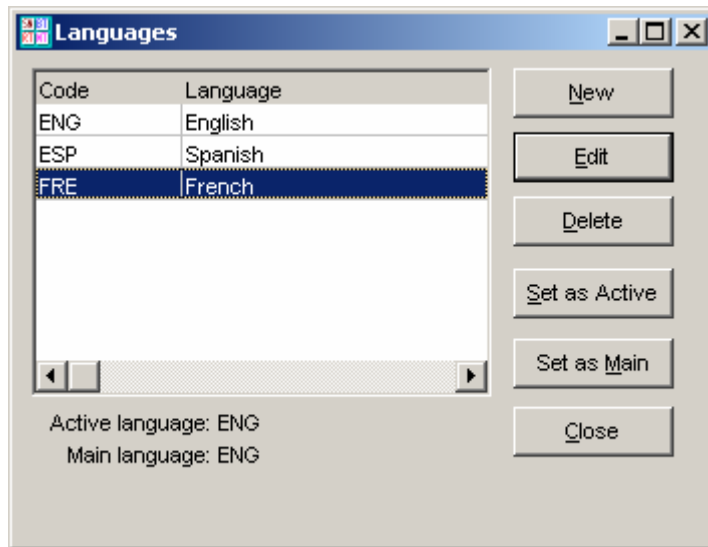
5.8 Select the lesson5data.txt file and click the **Open** button



5.9 Click the **Ok** button to go back to the main browser

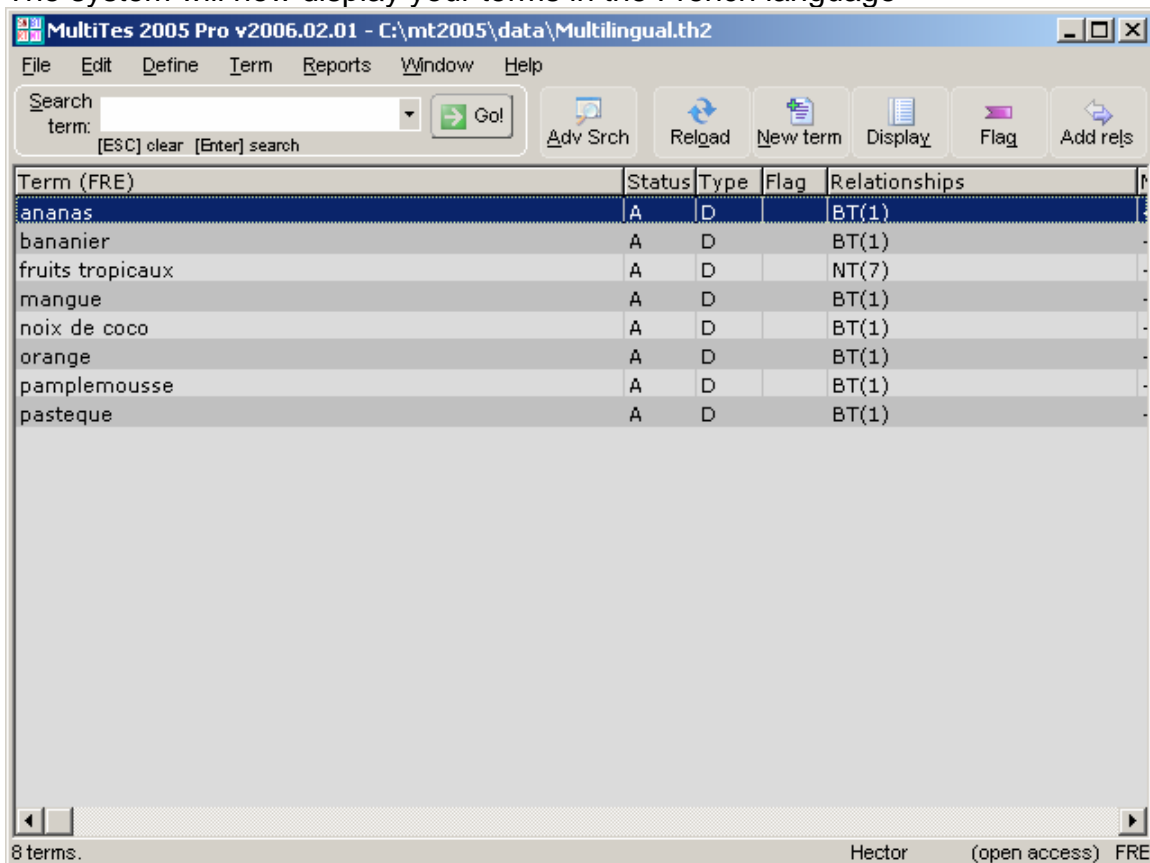
6. To display the main browser in a different language:

6.1 On the Define menu, click Languages

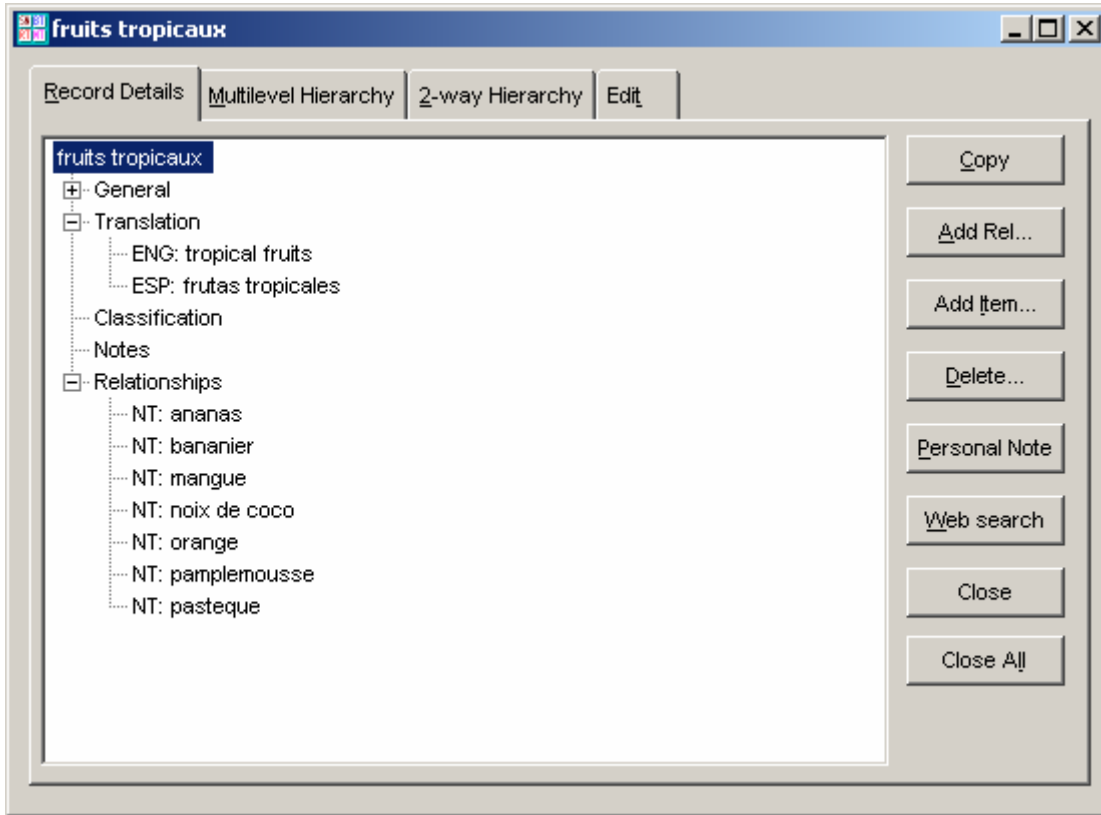


6.2 Click on **F**rench, and then click the **S**et as active button

The system will now display your terms in the French language



6.3 Doubleclick on **fruits tropicaux**



6.4 Click the **Close All** button to go back to the main browser

7. To print your thesaurus in French or Spanish

7.1 Set **French** (or **Spanish**) as the **Active Language**

7.2 On the **Reports** menu, click **Report Generator**

7.3 Go to the **Display Items** tab and select the following relationships

ENG: English
ESP: Spanish
BT: Broader Term
NT: Narrower Term

7.3 Click the **Print/Export** button

Alphabetical Report (French)

ananas

ENG: pineapple
ESP: piña
BT: fruits tropicaux

bananier

ENG: plantain
ESP: platano
BT: fruits tropicaux

fruits tropicaux

ENG: tropical fruits
ESP: frutas tropicales
NT: ananas
 bananier
 mangue
 noix de coco
 orange
 pamplemousse
 pasteque

mangue

ENG: mango
ESP: mango
BT: fruits tropicaux

noix de coco

ENG: coconut
ESP: coco
BT: fruits tropicaux

orange

ENG: orange
ESP: naranja
BT: fruits tropicaux

pamplemousse

ENG: grapefruit
ESP: toronja
BT: fruits tropicaux

pasteque

ENG: watermelon
ESP: sandia
BT: fruits tropicaux